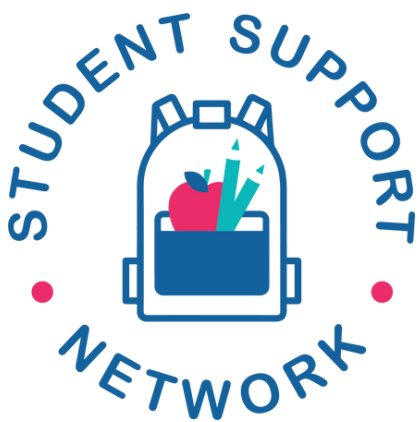


# ANNUAL REPORT 2022-2023

Fiscal Year '23  
July 1, 2022 - June 30, 2023



# Keeping Pace With Constant Change

Dear friends,

We've said it before, but the phrase "change is the only constant" never fails to provide insight, empathy, and framing as we move through our work at the Student Support Network.

Students constantly face change as they navigate through subjects, grade levels, schools, and peer groups. Youngsters who live amidst financial constraints, food insecurity, and the general instability that poverty brings feel the compounding impacts of change.

We feel it as an organization as well. As poverty levels across our Baltimore County community rise, school budgets decrease, and supply chain challenges persist, we must remain nimble. Sometimes positive change happens too: in Fiscal Year 2023, the Maryland State Department of Education awarded the Network with an unprecedented \$1 Million grant. We've acted fast to make difficult, but exciting, decisions around the best use of this new resource.

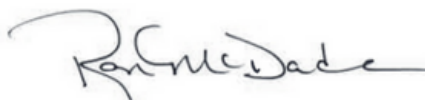
The close of FY23 also brought a major change in Board leadership as our founder and past Board President Laurie Taylor-Mitchell stepped into a new role. No words could ever express our admiration of what Laurie has built, or our gratitude for her care, creativity, and consistency.

We are incredibly thankful, too, for the thousands of community members who enabled the work of the Student Support Network during this banner year: our staff, school partners, volunteers, sponsors, donors, and cheerleaders.

Thank you for taking the time to read this report. Our hope is that you'll be inspired to share the good news of what we're accomplishing, together, with a friend or neighbor who hasn't yet learned about the Network.

Gratefully,

  
Wendy Stringfellow  
Executive Director

  
Ron McDade  
Board President

## BOARD OF DIRECTORS

Ron McDade, President  
Tam Lynne Kelley, Secretary  
Marianna Starostin, Treasurer  
Gwen Betts  
Ana Maria Cardenas  
Matt Copeland  
Michelle Corbett  
Robert Glaze  
Shalini Morgan  
Laurie Taylor-Mitchell, Founder

## STAFF

Wendy Stringfellow, Executive Director  
Helen Dyer, Program Coordinator  
Misty Kercz, Administrative Coordinator  
Kelly Sage, Program Manager  
Sara Buth Waire, Community Coordinator





# Meeting Basic Needs

The need for supplemental support continued to grow in FY23. The percentage of BCPS students eligible for free & reduced meals increased to a devastating 66% -- the highest it's ever been. The major grant we received through the Maryland State Department of Education enabled us to grow along with the need, and we served an astounding 11,000+ students this year, distributing more than \$514,000 worth of food and necessities.

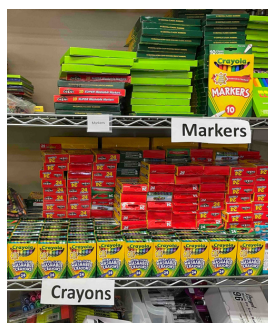
Free & reduced meals and SNAP benefits help, but food insecurity persists for many students. We provided well over 1,000 each of turkeys, egg cartons, milk gallons, bread loaves, produce boxes, and bags of non-perishables.



Students' educational experiences are enriched through the Network. We facilitated this science field trip, and equipped advanced math students with graphing calculators.

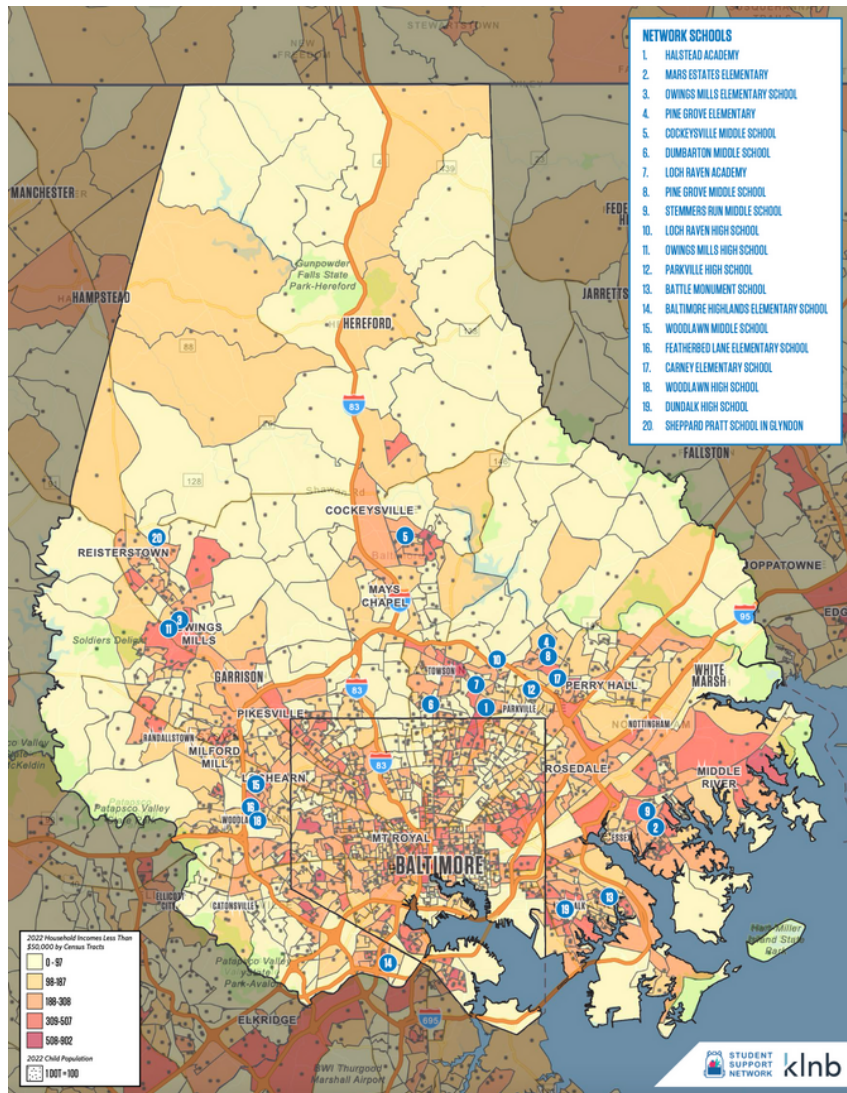


School supplies, food, personal hygiene products and more travel through Rooms of Support to students in need. We distributed 1,050 backpacks, 1,580 winter clothing items, 1,741 packs of menstrual products, and much more.



# Expanding The Network

The map below illustrates Baltimore County poverty rates, the concentration of children living in poverty across the county, and the locations of Network schools. In FY23, we welcomed the five schools at right to the Network.



Featherbed Lane Elementary School in Gwynn Oak is home to approximately 544 students, 100% of whom qualify for free & reduced meals, and 45% of whom depend on SNAP benefits.



Carney Elementary School in Carney is home to approximately 522 students, 97% of whom qualify for free & reduced meals, and 41% of whom depend on SNAP benefits.



Woodlawn High School in Woodlawn is home to approximately 1,815 students, 92% of whom qualify for free & reduced meals, and 33% of whom depend on SNAP benefits.



Dundalk High School in Dundalk is home to approximately 2,193 students, 90% of whom qualify for free & reduced meals, and 32% of whom depend on SNAP benefits.



Sheppard Pratt School in Glyndon is home to approximately 179 students with autism spectrum disorder and behavior & intellectual disabilities. 36% of them qualify for free & reduced meals.



# Collaborating With Partners

**Corporate and community partners help us stretch every dollar even farther, through their in-kind product donations and volunteer labor.**

*Featured here from top left:*

Kids Dental Space donates oral care products monthly



Trek Bicycles of Towson donated a bike and maintenance, providing a reliable ride to school

State Farm Insurance employees help organize our new storage space, The Hub

Weis Markets are a reliable source of fresh produce and grocery gift cards

Hollenshades Auto donates both training to students and car repair for families

On the Baltimore Ravens Caw to Action day, volunteers sorted coats, assembled bags of winter essentials and wrote notes of encouragement for students.





# Celebrating Our Community



The Student Support Network is only as strong as its volunteers, which is why we pause intentionally a few times a year to celebrate the people who give so much!



We dressed up to toast our collective efforts at *A Night for the Network* 2022, and kept it casual at our summer 2023 Volunteer Appreciation Event.



We give thanks year-round for the 40 Lead Volunteers who operate our Rooms of Support, for the dedicated members of our Board of Directors, and for the many individuals and teams who collaborate on projects large and small.

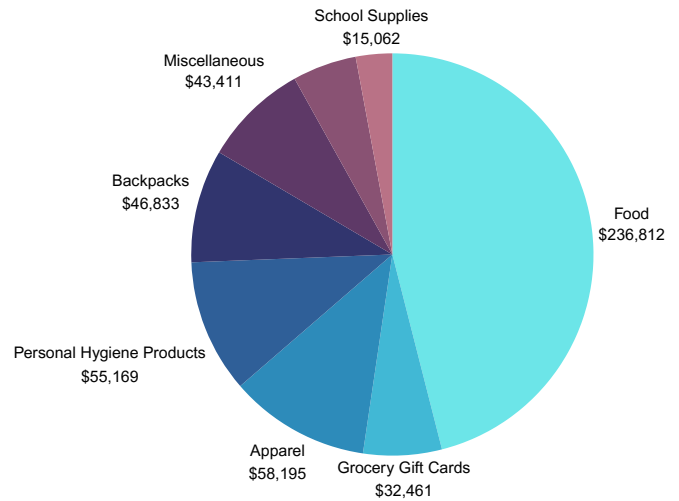




# Investing In Students

## 2022-23 Revenue

Direct Public Support	
Monetary Donations	\$319,534
In-Kind Donations	\$126,020
Program Income (Grants)	\$652,167
Investments & Other Income	\$13,256
<b>Total Revenue</b>	<b>\$1,110,976</b>



The pie chart above shows the allocation of funds spent on food and items distributed through Rooms of Support in FY23.

## 2022-23 Expenditures

Program Services	\$838,795
Management & General	\$116,619
Fundraising Expenses	\$93,300
<b>Total Expenditures</b>	<b>\$1,048,713</b>

\*Unaudited at the time of publication.

# How To Help

## Contribute

The following items are always needed at Network schools. Personal care items should be larger than travel-sized, so they will last a student more than one or two uses, but small enough to fit in a backpack. All items should be new.

We invite deliveries to The Hub, our storage space, on Wednesdays from 4:30 - 6:00 p.m. and Saturdays from 10:00 - 11:00 a.m. The Hub is located at 1925 Greenspring Drive, Timonium, MD, 21093.

### Personal Care Items

Shampoo & Conditioner  
Soap (no Irish Spring, please!)  
Body Wash  
Body Lotion  
Toothpaste & Toothbrushes  
Deodorant

### Food

Rice  
Peanut Butter  
Jam or Jelly  
Canned Tuna  
Mac & Cheese  
Boxed Cereal



## Volunteer

The Student Support Network runs on volunteer power! Join our dedicated team for a one-time or ongoing volunteer role. Visit [www.studentsupportnetwork.org](http://www.studentsupportnetwork.org) to complete our Volunteer Interest Form, and we'll get to work matching your skills, interests, and availability with an opportunity to serve.



## Advocate

Join our Advocacy Committee to help create systemic change to benefit students! Reach out to us at [contactus@studentsupportnetwork.org](mailto:contactus@studentsupportnetwork.org) to express your interest.

### Advocacy WIN!

In 2023, we learned that, come academic year 2023-24, BCPS would adopt the Community Eligibility Provision, providing universal breakfast and lunch to all students, district-wide.

Additionally, Maryland Meals for Achievement expanded, ensuring that students at schools with 40% or more eligibility for free & reduced meals (135 BCPS schools) may receive "breakfast after the bell," even if they arrive to school late.

Both of these accomplishments happened in large part thanks to the consistent work of our Advocacy Committee.

## Give

The Student Support Network depends on the generosity of our local community -- individuals, businesses, and foundations -- to fund our mission. We never charge for our services, so charitable contributions are absolutely essential! Visit our website to learn about giving and sponsorship opportunities. Thank you in advance for your generosity!