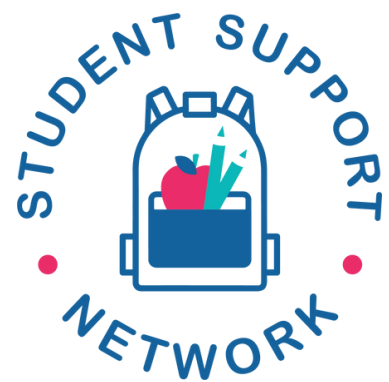


2021-
2022



ANNUAL REPORT

www.studentsupportnetwork.org

Leadership Update

Greetings!

Our theme for Fiscal Year 2022 (July 1, 2021 - June 30, 2022) was "Back to School, Still in Need." Students got back to in-person learning as the COVID-19 vaccines enabled a return to more group interaction, and we concluded our 15 month-long major food distribution effort and returned to providing our services primarily through in-school Rooms of Support.

Network staff and volunteers and school personnel noted upon the return to school buildings that students' need for extra support was greater than ever, so we worked hard to communicate that while for many people getting back to school felt "normal," many others were still very much in need.

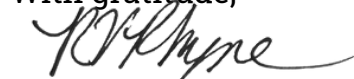
In addition to our observations, several data points confirmed this increased need. The percentage of BCPS students eligible for free and reduced meals, a measure of poverty, had increased from 43.74% in October, 2018 (pre-pandemic) to 52.71% in October, 2021. With rates typically fluctuating by less than 1 percentage point year over year in the previous decade -- having stayed steadily around 44% -- this change reflected a major increase in food insecurity and overall impoverishment. We also experienced an increase in requests for partnership from BCPS school personnel, and the waiting list of schools wishing to partner with the Network grew longer than ever.

Thanks to the generosity of our community, the dedication and growth of our staff and board, and the commitment of our volunteers, we were able to expand our programming in response to the need and requests for additional resources.

We welcomed two new schools, bringing the total number to 15 schools by the close of the fiscal year, and committed to partner with five more by the close of calendar year 2022. We expanded our emergency needs funding, stepped up our advocacy efforts, and solidified food distributions as a regular aspect of our services.

We thank all who read this report for your interest in meeting the needs of our neighbors across Baltimore County, and for the many ways you contribute to make that possible.

With gratitude,



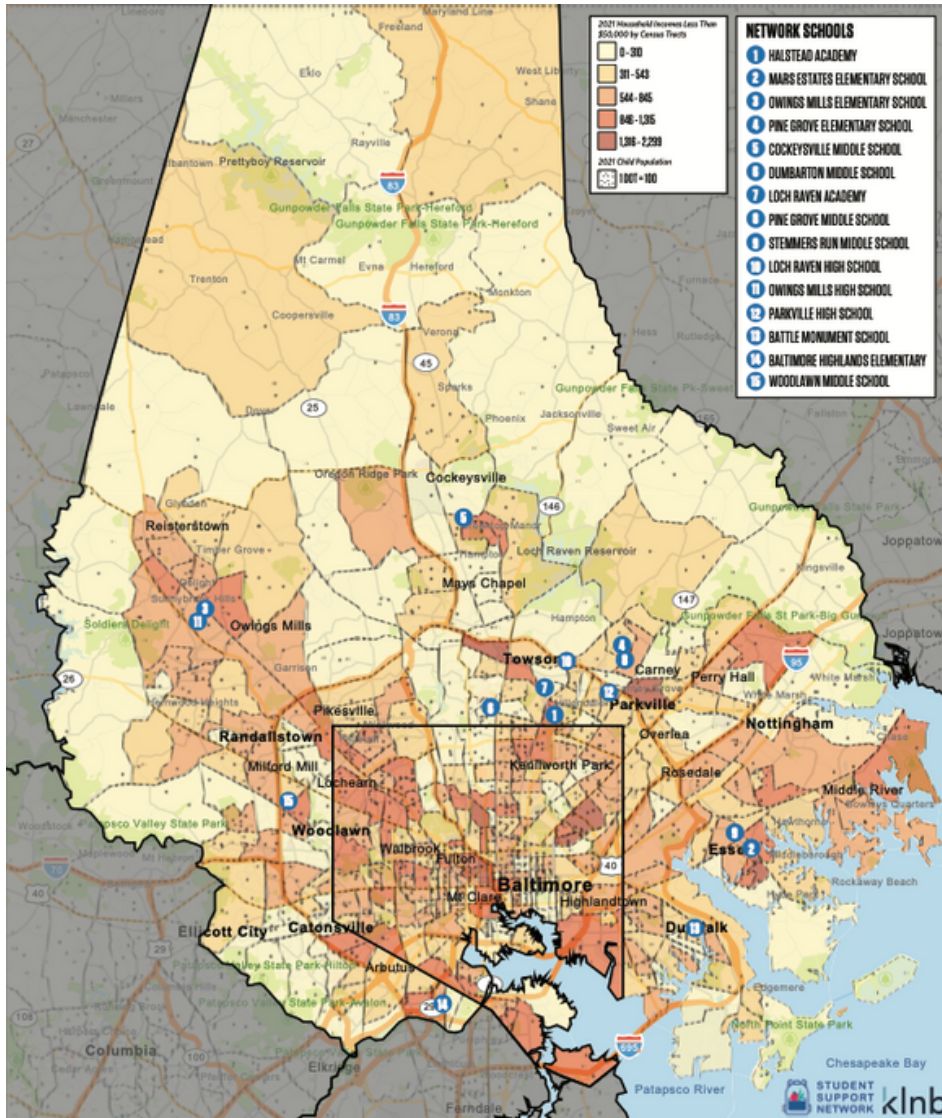
Rina V. Rhyne, MSW
Executive Director



Laurie Taylor-Mitchell, Ph.D.
Founder & Board President

Our Reach

We activated partnerships with two new schools this year, deepening our presence on the west side of the county. Welcome, Baltimore Highlands Elementary School and Woodlawn Middle School, to the Student Support Network!



Baltimore Highlands:

- A Title I elementary school in Halethorpe
- 497 students
- 363 students qualify for free meals
- 217 students depend on SNAP benefits



Woodlawn:

- A Title I middle school in Gwynn Oak
- 662 students
- 503 students qualify for free meals
- 305 students depend on SNAP benefits

This map includes data from the 2021 Census on the concentration of families with incomes less than \$50,000 and on the concentration of the child population. It is overlaid with locations of Network schools.

Our Efforts

Just a small sampling!

We welcomed students back to in-person learning with a huge backpack and supply drive!



We sent hundreds of families home with Thanksgiving turkeys, hams, produce, and canned goods.

We readied for winter by providing countless coats and holiday gifts.



We started a new service of providing birthday bags to help families celebrate their students' special days!

Our Impact

Advocacy Wins

In May of 2022, our tireless work advocating for the needs of low-income students paid off, when Summer SNAP (Supplemental Nutrition Assistance Program) benefits were expanded to reach an additional 18,000 Baltimore County children, for a total of 28,000. This meant \$100 extra dollars in the pockets of families who experience food insecurity!

Then in June, County Executive Johnny Olszewski announced that more than 2,000 additional children would receive Summer SNAP food assistance after he designated an additional \$200,000 in County funding!

At the state level, Network advocacy helped put an additional \$391 on the P-EBT cards of the approx. 59,000 students who qualify for free and reduced meals at school, thanks to state legislators encouraging MSDE to apply for additional federal funding for food assistance.

The Student Support Network Advocacy Committee, led by Board member Tam Lynne Kelley, testified at every district hearing on the county budget, collaborated with the PTA and NAACP, and lobbied state legislators to achieve these sorely needed benefits for impoverished children in Baltimore County. Kudos!



Messages of Gratitude

“ I have to thank you all. I have done this work pre our partnership, but not to this volume at one time. Your organization is amazing on so many levels. The joy and relief that families have knowing that they have this resource at our school is great. We are thankful and grateful for our partnership.

-Social Worker at Stemmers Run Middle”

“ It was extremely valuable to see the freshman living spaces. Being able to walk into a space allows you to imagine your life within it. Seeing and walking through the dorms was an enlightening experience.”

-Parkville High School Student, reflecting on a field trip to a college

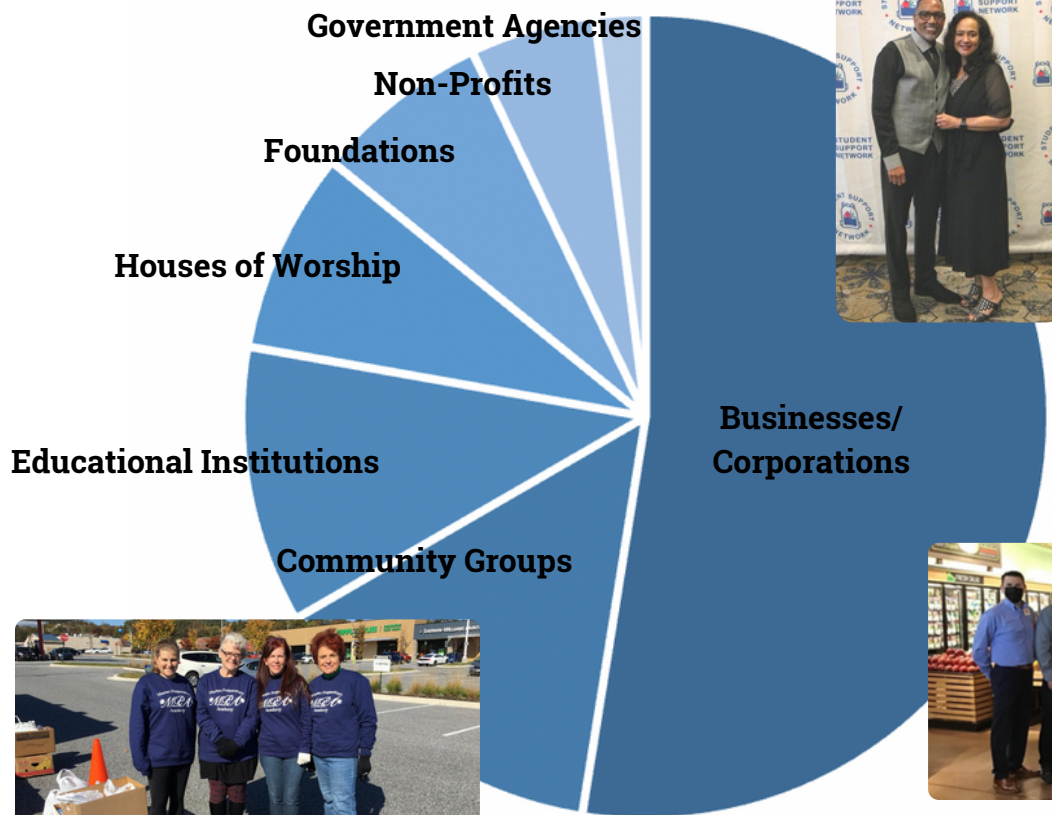
“ We are beyond thankful for you and your team! You're such a blessing for our school community! Your Mars Estates families are grateful for you all!”

-Principal, Mars Estates Elementary

Our Partners

We were the grateful recipients of generous in-kind and monetary support from more than 100 organizational partners this year -- too many to list here! Below is a representation of the types of organizations that meet the needs of children in need, through the Student Support Network.

More than 1,000 generous individuals also bolstered our efforts this year, through their contributions of volunteer time, connections and advice, needed items, and financial contributions. While a great deal of need persists in our community, it is met with a tremendous amount of generosity.



Representatives from lead sponsor BD Life Sciences enjoy A Night for the Network



Weis Markets made the Network the beneficiary of their Giving Tuesday fundraiser



Marian Preparatory Academy is one of several schools that supports peers by collecting food and supplies



Young visitors to the Hampton Pool learn about the Network during their food and supply drive



Members of service fraternity Alpha Kappa Psi adopted several families at the holidays

Hollenshades Auto Service sponsors the Network and helps families get back on the road!



Our Team

Our fantastic team of staff, board, and volunteers keeps growing and achieving great things! These are the people who joined our team or received recognition for their efforts this year.



Kelly Sage, **Program Coordinator**



Sara Buth Waire, **Community Coordinator**

New Board Members:



Michelle "Gigi" Corbett



Veneeta Eason



Shalini Morgan



Michael Patz



Founder and Board President **Laurie Taylor-Mitchell** was honored by the Baltimore County Women's Commission with the "Woman Making a Difference" award. Laurie was recognized for her education advocacy work and for her founding of the Student Support Network.



Volunteer **Jeff Dorsey**, head of the pandemic food distribution "Bread Brigade," was recognized at the Salute to Hometown Heroes dinner presented by the Chesapeake Gateway Chamber of Commerce and Johns Hopkins Medicine for his community service.



Volunteer **Phoebe Evans Letocha** received a Martin Luther King Community Service Award from Johns Hopkins University for her service to the Network and advocacy for alleviating period poverty through drives for period products.



Volunteer **Mike Preston** received a Martin Luther King Community Service Award from Johns Hopkins University. Mike coordinated the Peace of Mind fundraising campaign for the Network in 2020.

Our Financials

2021-2022 REVENUES AND EXPENDITURES

Revenue

Direct Public Support	
Monetary Donations	\$353,696
In-Kind Donations	\$209,895
Program Income (Grants)	\$258,280
Total Revenue	\$821,871

Expenses

Program Services	\$468,130
Management & General	\$86,370
Fundraising Expenses	\$105,772
Total Expenses	\$660,272

Change in Net Assets

\$161,599