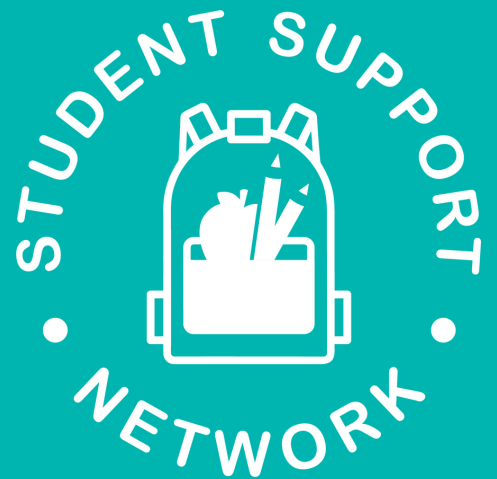


Annual Report 2020-2021



photo: Jerry Jackson



FOUNDER'S MESSAGE

The Student Support Network exists to improve the lives of Baltimore County Public School students living in poverty by providing food, other basic necessities, and advocacy support. This has been our mission since our founding and, until 2020, we delivered it in a consistent manner, meeting students primarily in their schools at our Rooms of Support.

When school buildings closed in the spring of 2020 with the onset of the COVID-19 pandemic, and remained closed for nearly the entirety of the 2020-2021 academic year, our mission remained the same, yet the method of delivery changed dramatically. The ways our team of staff, board members, volunteers, and partners stepped up, as we diverted all of our resources to major weekly distributions, were absolutely incredible. They showed us what the Network could accomplish on a much larger scale and gave us permission to imagine how much more we could do.

There is no way a single report could capture the unfathomable scope of the need that this pandemic created, nor the extent of the empathy, generosity, and determination that was shown in this year (July 2020 - June 2021). Likewise, no words can adequately express my gratitude for how our community showed up to serve. I am proud to share a glimpse into an unforgettable year.

Laurie Taylor-Mitchell

Laurie Taylor-Mitchell
Founder and Board President

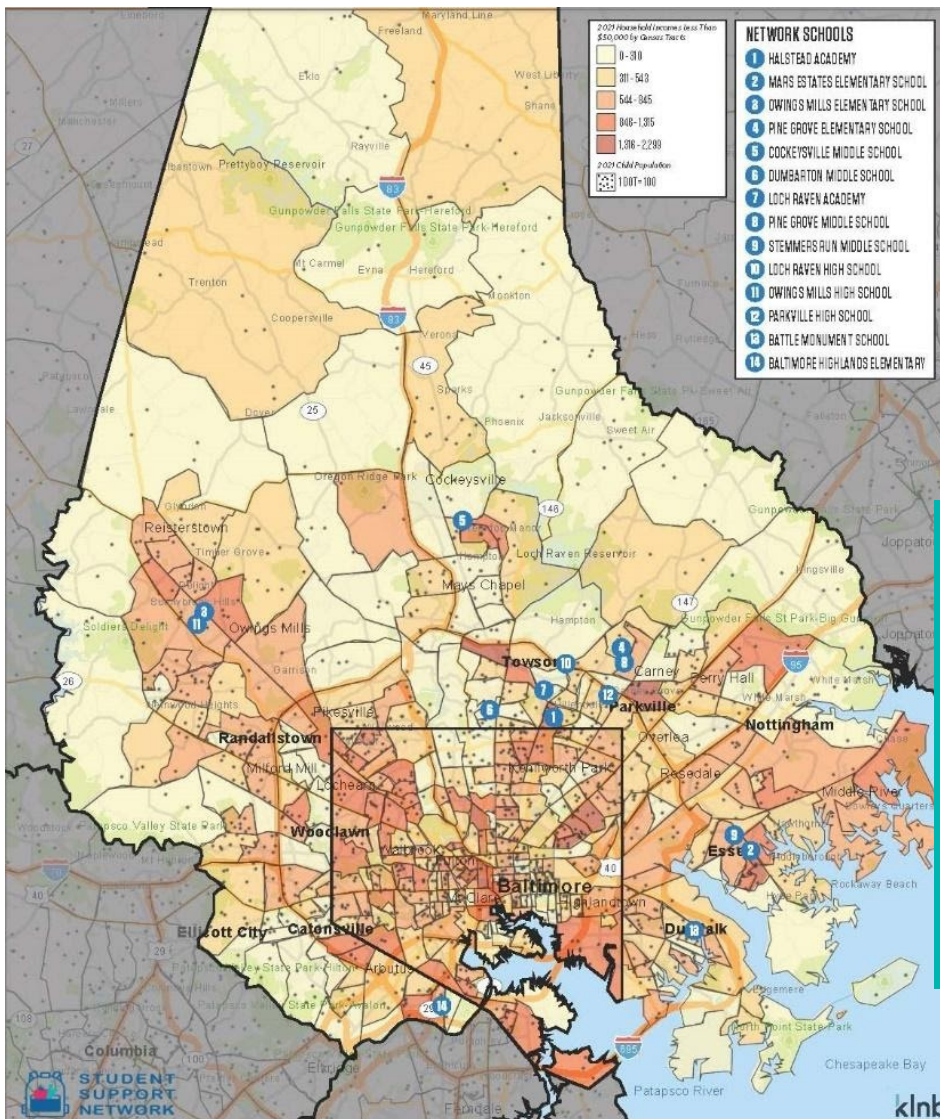


OUR REACH

13
BCPS schools with Network programs at year-end

4
new schools added to the Network this year

6,200+
students living in poverty who attend Network schools



We welcomed Owings Mills High School, Battle Monument School, Stemmers Run Middle School, and Mars Estates Elementary School to the Student Support Network

This map includes data from the 2021 Census on the concentration of families with income less than \$50,000 and on the concentration of the child population. It is overlaid with locations of Network schools.

OUR EFFORTS

When school buildings first closed in March, 2020, in response to the COVID-19 pandemic, the Network shifted our model to supply students with necessities as they learned at home. We established weekly mass distributions of food and supplies, which grew and continued through the entirety of FY21. By the time distributions ended in June, 2021, the Network had sustained them for 15 months.



July 2020: Baltimore County Government begins to supply large amounts of non-perishable food, fresh produce, milk, and eggs to Network distribution sites – a game changer that permitted our volunteers to distribute much more food.

September-November 2020: With support from leadership of KidzTable (now Good Harvest), the Network begins distributing meals for children under the extended federal Summer Meals Program.



January – February 2021: The Network distributed thousands of bags of household supplies and over half a million period products, about 70% of which were donated.

March 2021: We celebrated six months of Network volunteers delivering food and supplies directly to the residences of families in need. From September to March, volunteers made approx. 600 deliveries to about 3000 BCPS family members in need. In that time span, volunteers drove more than 450 hours and 4450 miles!



June 2021: The Network made the difficult decision to discontinue the large distributions of food and supplies. With schools reopening in the fall, we needed to return to our original mission of assisting students in need through our Rooms of Support in Network schools.

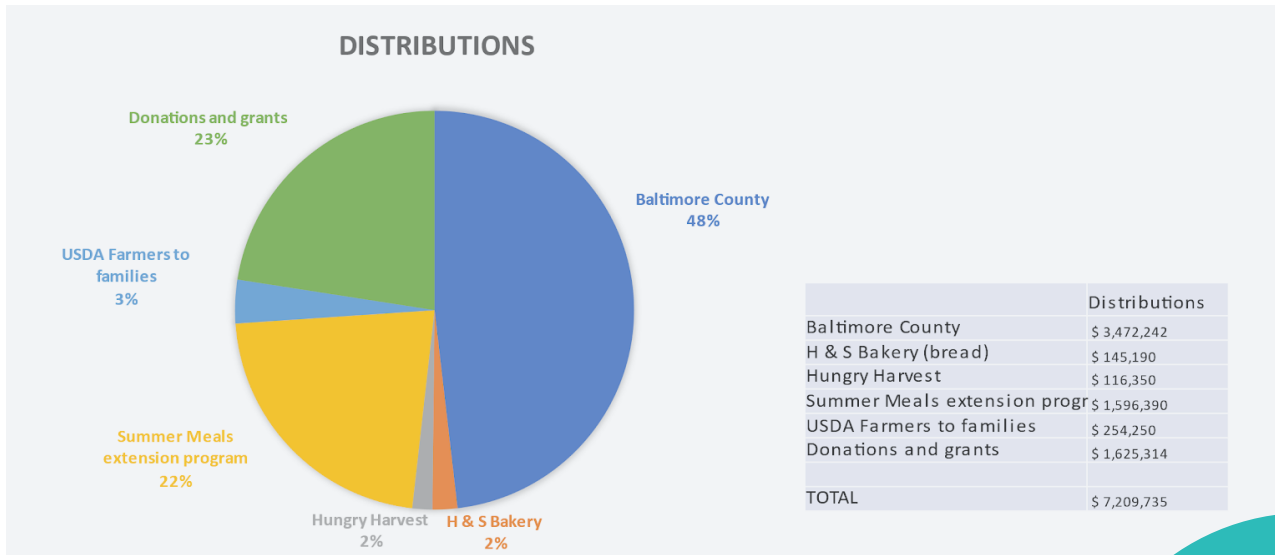
June 2021: The Network held a party to appreciate the tremendous work of our volunteers over the last 15 months on June 30. Dozens of volunteers shared stories and relived memories. Speakers included Congressman John Sarbanes, State Delegates Cathi Forbes and Michele Guyton, and Assistant Principal Elliot Flam of Owings Mills High School.

“This has been very helpful because right now we don’t have anything.”

By June 30, the Network had received commendations from all levels of government for its service during the pandemic: from the Baltimore County Council, the Maryland State Assembly, and from the office of Congressman Sarbanes.

OUR IMPACT

Total Distributions for the Emergency Food Program and Network Schools:
Sources of distributions 3/20/2020 through 6/30/2021



BCPS Pupil Personnel workers made more than 200 deliveries, providing food and essentials to more than 1000 students and family members

We distributed more than \$179,000 worth of diapers, and more than \$100,000 worth of period products

We got \$7.2 million worth of food - about 3.5 million meals - into homes across Baltimore County

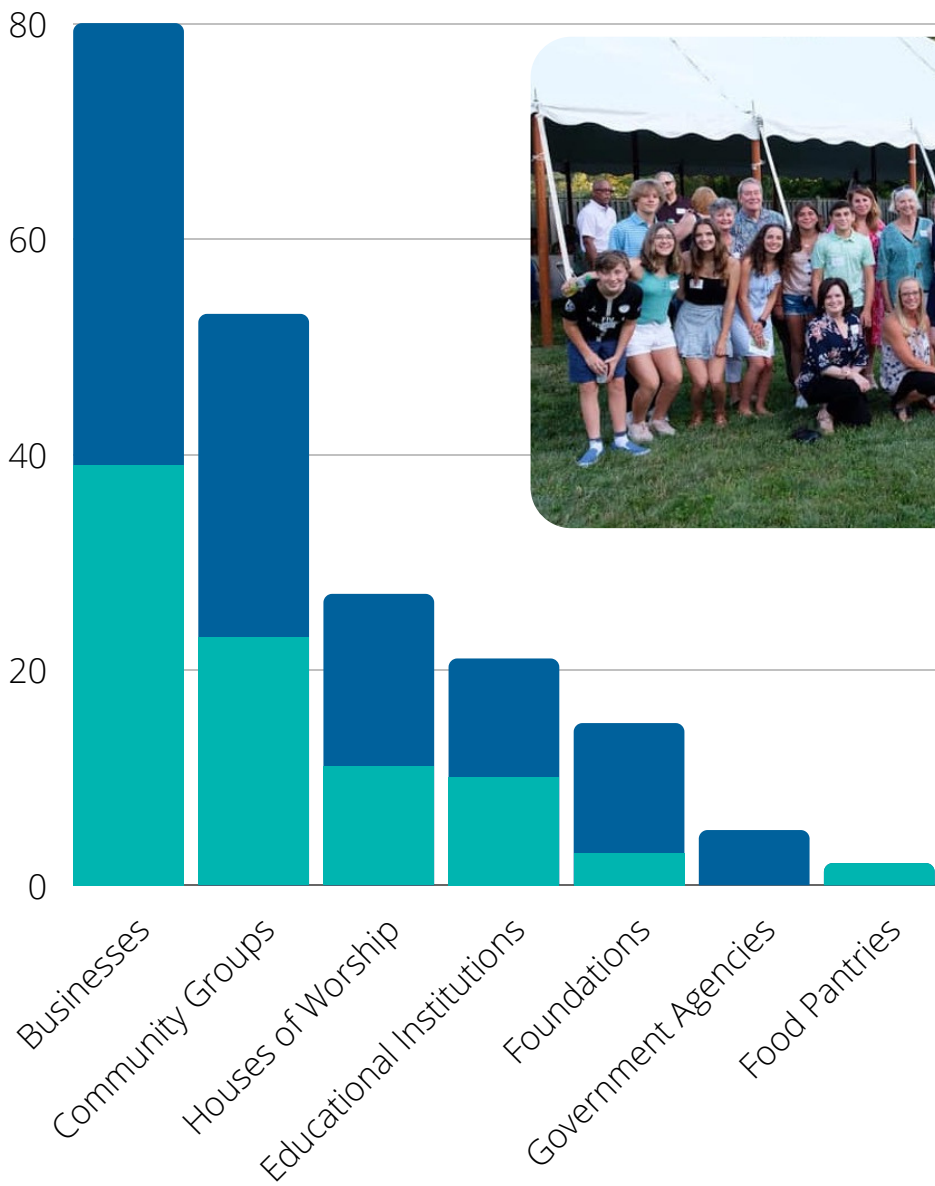
The interest list for new school partners grew exponentially and we started to plan for expansion



“ It is because of your generosity I was able to have enough food in my home and electricity. Words cannot express how grateful I am for the help. ”

OUR PARTNERS

We have always delivered services to students most effectively in partnership with fellow community-minded organizations. This year, existing partnerships flourished (in green below) and many new ones were established (in blue below). These collaborations enabled us to reach far more students and families than we would have on our own! Nearly impossible to quantify and equally important: the countless individuals who selflessly volunteered their time and energy. Thank you, volunteers!



Increases in partnerships and donations of resources

OUR TEAM

We grew our team to keep pace with the demand for our services.

Rina Vaishnav Rhyne, MSW, joined the Student Support Network in February as our first full-time Executive Director. Rina is a social worker and has extensive experience with running volunteer programs, administering grants, and developing outreach programs. Rina holds a Master of Social Work from the University of North Carolina at Chapel Hill and is currently pursuing her certificate in Nonprofit Management. Rina is a resident of Baltimore County and a parent and volunteer in the BCPS system.



Helen Dyer joined the Student Support Network in August as our part-time Administrative Coordinator. Helen most recently worked at a local preschool, and has always volunteered her time and energy, with children and their well-being as a primary focus of her efforts. She brings broad experience in bookkeeping and administrative duties. Helen holds a bachelor's degree in Fitness Management from the University of Delaware and lives in Baltimore County with her husband and two children.



Tam Lynne Kelley, LMSW, joined our Board. Tam is a Licensed Master Social Worker who is passionate about advancing social justice and public health. She has advocated for several policy changes that significantly improve children's access to food, in and out of school, including the Maryland Cares for Kids Act, Summer SNAP for Children, and expanding access to the Community Eligibility Provision. As Chair of our Advocacy Committee, Tam will work to sustain funding for these programs.



OUR FINANCIALS

2020-2021 REVENUES AND EXPENDITURES

Revenue

Direct Public Support	
Monetary Donations	\$424,557
In-Kind Donations	\$6,312,887
Program Income (Grants)	\$256,863
Other Income	\$545
Total Revenue	\$6,994,852

Expenses

Operating Overhead	\$23,002
Payroll	\$75,068
Program Expenses (including weekly distributions of food and supplies, and grocery gift cards)	\$6,863,660
Other Expenses	\$26,512
Total Expenses	\$6,935,218

Net Operating Revenue **\$59,634**

See our Financial Review and Form 990 for the year ending June 30, 2021, at www.studentsupportnetwork.org.